



Arctic, Baltic, Barents, and Atlantic Mission Network Overview: US Perspective – Condensed Brief

16 Jan 2019

Presented to:

NORTHCOM/NORAD Arctic
Communications TEM

Presented by:

Mr. Matthew Shadeed
DoD CIO MPE-IS CHENG



Agenda

1. Why is the ABBA Network Needed?
2. What is the ABBA Mission Network?
3. How did we get here with ABBA?
4. Operational missions supported
5. What is the Operational View of the Network?
6. ABBA Services
7. Importance of RMP / Maritime COP





Why is the ABBA Network Needed?

The ABBA Mission Network addresses multiple mission needs for this region:

Communication difficulties specific to this region –
geographic differences in communication physics, economic differences in available bandwidth, and adversary capability differences

Collaboration difficulties – *enabling information sharing between NATO and non-NATO coalition partners that operate within this area of responsibility*

Contribution difficulties – *truly federating the coalition partner capabilities available to provide the best of breed to the mission*



What is the ABBA Mission Network?

The Arctic, Baltic, Barents, and Atlantic (ABBA) Mission Network is a federated environment for sharing of coalition mission applications and information amongst mission partners.

This Mission Partner Environment is a federation of mission networks where each of the mission partners “contribute” and use their own IT infrastructure, services, doctrine, and procedures based upon agreed to MPE / FMN standards and protocols.



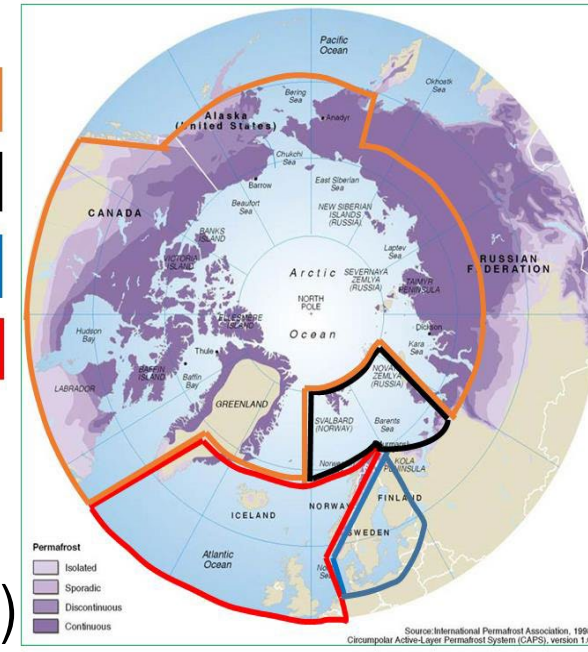
ABBA Regions / Communities of Interest

The ABBA US Node MPE Mission Network emerged from US NORTHCOM and US EUCOM requirements for operations in the Arctic, Baltic, Barents and North Atlantic (48° N to 90° N).

ABBA Communities of Interest (COIs):

- Arctic Ocean and its approaches Northwest Passage (Baffin Bay – Beaufort Sea – Chukchi Sea)
- Northern Sea Route (Barents Sea – Kara Sea – East Siberian Sea)
- Bering Strait
- Barents Sea
- Kola Peninsula Baltic Sea and its approaches
- Baltic Sea and its approaches → Col North Atlantic
- Greenland – Iceland – UK Gap

- Arctic
- Barents
- Baltic
- North Atlantic





Operational Missions Supported

The ABBA Enclave coalition missions are based on the duration and intent of the mission(s):

- Maritime Domain and Situational Awareness
- Maritime Warfare
- Sea Lines of Communications Protection
- Critical Maritime Infrastructure Protection
- EEZ Resource counter exploitation
- Humanitarian Assistance/Disaster Relief.
- Increase Multinational Military exercises
- Increase Research and Development
- Search and Rescue



What investment is required to federate in the ABBA Network?

Each Mission Partner must make the investment to deal with

- 1) *Diplomacy*
- 2) *Policy*
- 3) *Joining Mission and Exit Instructions*
- 4) *Governance*
- 5) *Security*
- 6) *Doctrine*
- 7) *Tactics, Techniques and Procedures*
- 8) *Infrastructure (Gateways and Guards)*

for its sovereign FMN compliant Mission Network to federate with the ABBA Mission Network



Projected ABBA Services

Services *(these services continue to be defined and prioritized by COIs):*

- Chat
- Voice
- eMail
- Video Teleconferencing
- Unclass RMP Service (Recognized Maritime (White) Picture)
- Global Address List (GAL)
- Web File Share / Portal Services
- Identity and Access Management / Control (IdAM)
- Geospatial Situational Awareness (GSA)
- Data Centric Classified REL RMP (Recognized Maritime Picture)
- Military Messaging Handling Service
- Formatted Message Service
- Identity and Access Management / Control (IdAM)



ABBA and FMN

The ABBA MPE enclave spans a large and diverse portion of the globe, and encompasses several Regions of Interest (ROIs) to ABBA nations

MPE / FMN are *federated* networks, based on standards and not products, with each participating nation contributing its available resources and capabilities

ABBA represents AN instantiation of a federated maritime mission network that can inform the development of FMN process and principles, by closer relationships.